

IMS



IMS is an industry-led international research and development(R&D) program established to develop the next generation of manufacturing and processing technologies. Companies and research institutions from Australia, Canada, the European Union and Norway, Japan, Korea, Switzerland, and the United States of America participate in this program. Other regions are encouraged to join.

NEWSLETTER

Volume 1, Issue 1
2002 1



IMS Newsletter

IMS
IMS 1996 3 , (Intelligent
Manufacturing Systems)
()가 IMS
. 97 11 가 , 2000
가

IMS

, 21

가

가

IMS

IMS

가

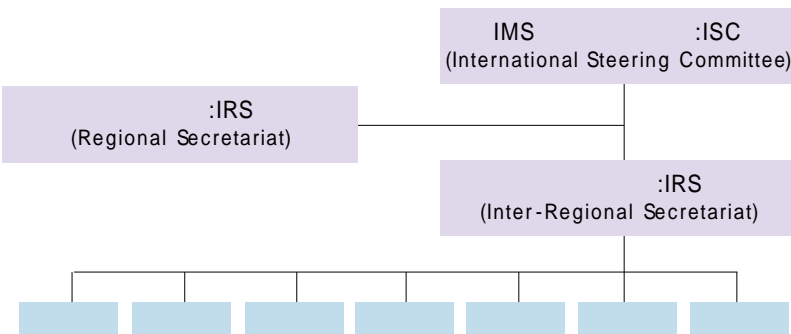
INSIDE THIS ISSUE

· IMS	2
I. IMS	2
II.	3
III.	4
· IMS	6
I. IMS - HUTOP	6
II. IMS - EFSOT	8
·	10
·	12
· For More Information	12

IMS ?

IMS (International Manufacturing System)은 1989년 H. Yoshikawa (Hiroshi Yoshikawa)가 설립되었습니다. IMS는 1992년 10월 11일 OECD (OECD)에 가입되었으며, 1995년 10월 22일 EU 15에 가입되었습니다.

- 1.
- 2.
- 3.
- 4.
- 5.



- 10
1. 가
2. 가
3. 가
- 4.
5. 가
- 6.
7. eBusiness eWork
8. , , 가
9. eManufacturing
- 10.

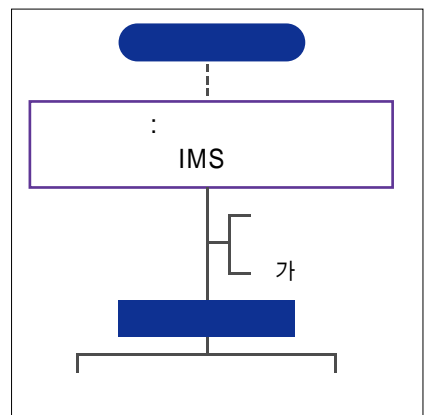
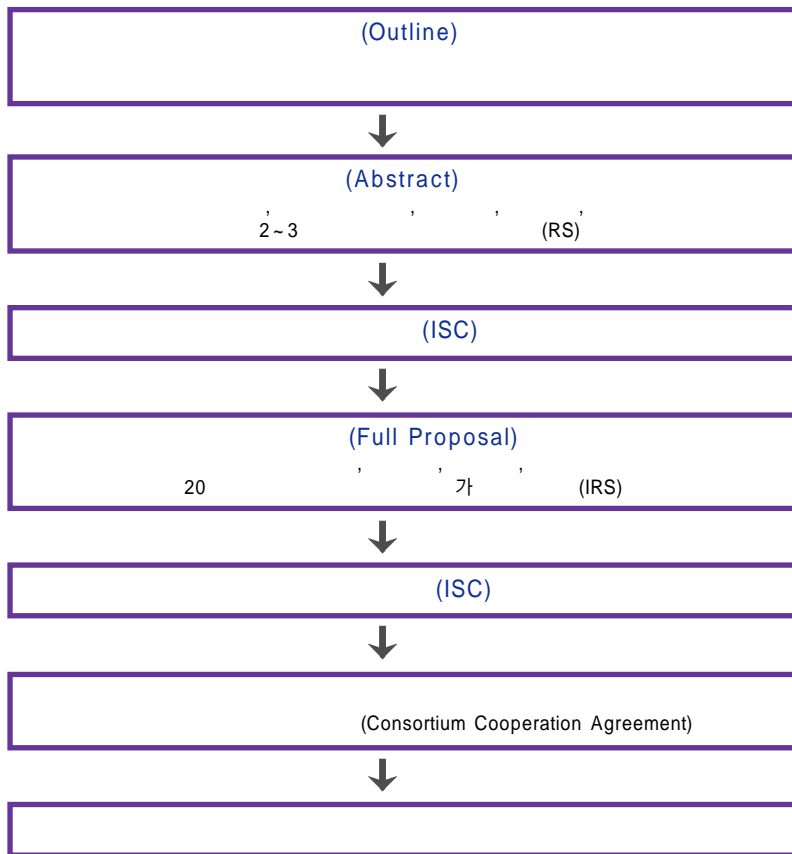
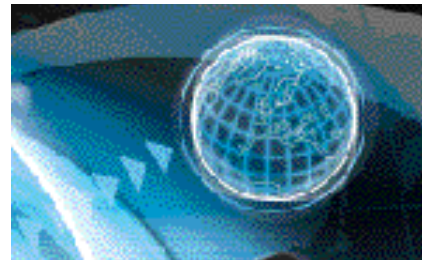
IMS는 OECD (OECD)와 CSTP (CSTP)에 가입되어 있습니다. IMS는 1995년 10월 11일 OECD에 가입되었으며, 2005년 10월 200 US\$ (2,500 US\$)를 투자했습니다. 2001년 11월 70% (58%)를 투자했으며, 42%를 투자했습니다.

가	
	Sony, FANUC, Toshiba, Mitsubishi
	NIST, Xerox, MIT, Boeing, GM
	Lockheed Martin, Canada
	QMI, IRIS, BHP, HPM
	IBM, ICT
	Daimler-Chrysler, ABB, RWTH
	SCM, ,
	KITECH

IMS

?

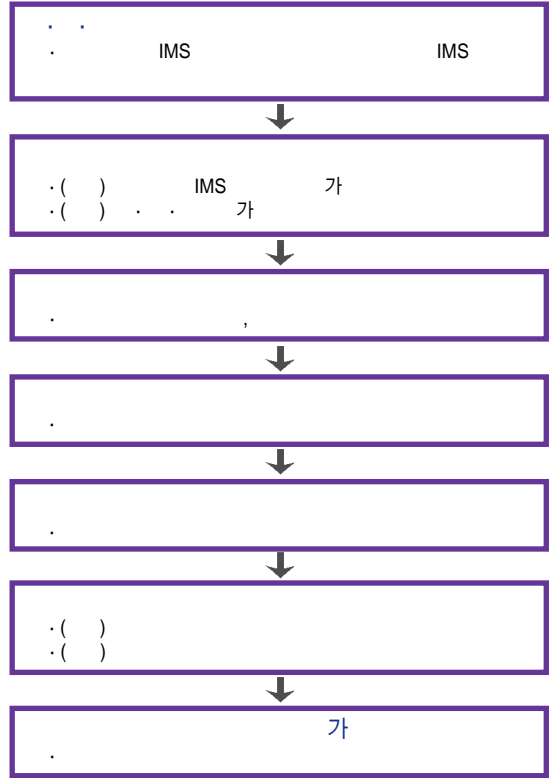
IMS 3 IMS (),
 , IMS
 10 ,
 , 가가 ,
 IMS



IMS 가 (CCA)
 , , IMS 가 (ISC)

“ IMS ”

「 IMS 」 1
10 1
60%
()
IMS
IMS (CCA)
「 IMS 」
6 , 7
9
2~3



IMS ?

IMS

「 IMS 」 Globeman21, GNOSIS, NGMS
MMHS 3 가 , 1
HMS, IF7 19 가
7 가
. 17
가
STEP-NC, OCMMS, NGMS RPD, LicoPr
6

(2002. 1)		
가	19	4
	7	1
	13	1
	4	
	16	
	59	6

IMS

2000 IMS 5
 (: 2000~2005) , 18,150 .
 6 , 2000 10
 3 (RPD, STEP-NC, OCMMM) 2001 10 3 가 .



1. RPD(Rapid Product Development)

EU, ,
 , KAIST가 . [: bwchoi@kitech.re.kr]

2. STEP-NC(STEP Data Interface for Numeric Control)

NC STEP (ISO 14649) STEP
 CAD/CAM CNC , 가
 , EU, , ,
 가 . 가
 [: whkwon@cisl.snu.ac.kr]

3. OCMMM(Optical Characterization for MEMS Mfg.)

(Sub - micro) , ,
 가 . EU, ,
 SCM, , .
 [: SCM johankim@samsung.co.kr]

4. (NGMS)

LG-EDS, LG , , ,
 . [: LG-EDS tkkim@lgeds.lg.co.kr]

5. (LcoPo)

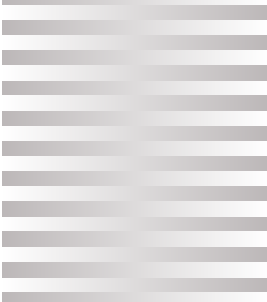
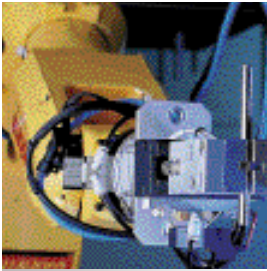
()
 , .
 Tool -Kit , ,
 . [: mjkgang@skku.ac.kr]

6. PB free soldering (EFSOT)

PCB(Printed Circuit Board) (Pb)
 LG , , ,
 . [: LG choilje@lge.co.kr]
 : (hyosun@kitech.re.kr) (jjin@kitech.re.kr)



.IMS-HUTOP



1980 (machine technology) (IT) . 1980~1990 CALS CIM . 1990

, 1960 4, 2, 1

1980~90 CALS/CIM 5, 5,

2 . 1990~2000 CE/ERP 4,

6, 2 가 . 2000

5, 6, 8

가 (Human Technology) ' 가

' IMS ' HUTOP ' Human Sensory Factors for Total Product Life Cycle ' ,

. HUTOP , EU, , . EU

HUTOP ' (framework)

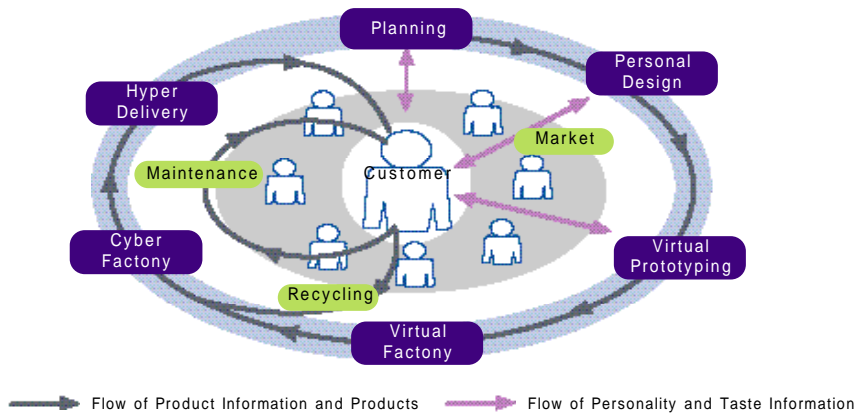
, ,

, ' Planning ' Personal Design ' Virtual Prototyping ' ' Virtual

Factory ' Cyber Factory ' ' Hyper Delivery ' ' Maintenance

. ' Recycling

, HUTOP - - 3 ,



(WP) . WP1 ,
 . WP2 Planning, Personal Design, Virtual Prototyping
 , WP3 Virtual Factory Cyber Factory , WP4

WP2

가
 3
 Kansei
 Kansei
 3 가
 WP3 () 가 3가 (Virtual Factory)

WP4

가

(SCM),

(configuration)

(cyber factory)

> [bwchoi@kitech.re.kr]

II. IMS - EFOST

Pb Free Solder

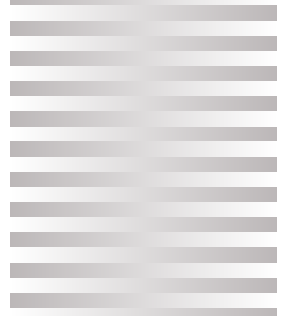
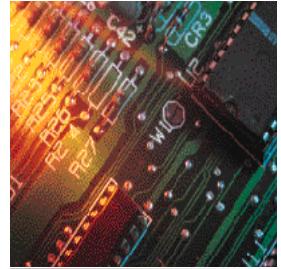
Pb Solder 가 , /
 가 . 가 Sn Pb
 . Sn , Pb
 , 가 Gasoline ,
 Solder / Solder (溶出)
 가
 (WEEE) / 2006 1 1
 Solder Pb 가
 EU 2001 4 1 가 (Recycle)
 가
 Pb free solder
 Sn Sn - Ag - Cu, Sn - Cu, Sn - Ag - Bi, Sn - Zn - Bi Sn -
 Pb Solder ,
 Solderability,
 가 가

Pb free

Pb free

WP	Topic	Organizations	Activities	Outcomes
WP1	Pb Free Soldering	LG , Philips CFT, Hitachi, Fujitsu Osaka Univ., .etc	-Pb Free Solder/ Metallize Solderability, Database	- Solder /
WP2	Pb Free Soldering 가	Tohoku Univ., Juntendo Univ., Shizuoka Univ., NIES, Hitachi	-Pb Free , -Pb Free -Pb Free	
WP3	Pb Free Soldering Life Cycle 가	Philips CFT Tech. Univ. Berlin Tokyo Univ., NEC Hitachi	-Solder / 가 -Soldering 가 -Pb Free Solder 가	
WP4	Solder Recycle Reuse	Osaka Univ., NEC Indumetal and Gaiker	- Solder Solder	

. Pb free 가 / 가
 . Pb free solder 가 가
 가 Pb free 가
 Pb free 가
 , Next Generation Environmental Friendly Soldering Technology
 (EFSOT)
 . Sn-Pb solder (全廢) ,
 / 가,
 가 , Recycle
 Reuse , LCA 가
 Pb free
 EFSOT Pb free solder
 , 가 . ,
 / 가
 가 , 가



Pb free soldering

Pb free soldering LG ()
 , () WP1 Member , Pb free solder
 가 Solder 가
 Database
 1 (2001) Sn - Ag - Cu - Bi LG Sn - Bi Soldering
 Database , 2
 가, 3 가 Pb free solder
 Database
 EFSOT 가 Pb free solder
 Database
 Pb free soldering
 Pb free solder
 가
 가 Pb free solder
 Cost ,

: <LG > [choilje@lge.co.kr]

IMS

IMS HOD Meeting

: (Tokyo)
 : 2002 2 4
 「IMS HOD(Heads of Delegation) Meeting」 2002 2 4 () Radisson
 . 2001 11 14 (ISC14)가 2002 5
 IMS ,IMS
 가 IMS
 IMS ()
 IMS ()가 .

International Manufacturing Leaders Forum

: (Adelaide)
 : 2002 2 8-10
 South Australia (The Centre for Advanced Manufacturing
 Research) 「IMLF(International Manufacturing Leaders Forum)-2002」가
 , Adelaide
 Murray
 ‘Murray Princess’
 가
 . 「IMLF -2002」
<http://www.camr.unisa.edu.au/imlf2002.htm> .

WSEAS International Conference

: (Interlaken)
 : 2002 2 11-15
 WSES (The World Scientific and Engineering Society) WSEAS
 NNA(Networks and Applications) 2002, WSEAS FSFS(Fuzzy Sets and Fuzzy Systems)
 2002, WSEAS EC(Evolutionary Computation) 2002 가 2002 2 11~15
 Interlaken .
<http://www.wseas.org/wseas/conferences/2002/interlaken/nna/> .

14 IMS (ISC14)

: (Yokohama)
 : 2002 5 23-24
 14 IMS 가 2002 5 23~24 가
 IMS
 2 (5 , 11) IMS ,가
 () () .

IMS

2 IMS Forum

: ()
 : 2002 3 15 () 08:30-17:00
 IMS 「 IMS 」
 『 2 IMS Forum』 2002 3 15 () ()
 ‘ IT ’
 IMS
 가
 IMS (http://ims.kitech.re.kr) IMS

<<< 2 IMS Forum

	T E L
	F A X
	H . P
	E-mail
()	Total Product Life Cycle
()	Manufacturing Processes
()	Strategy / Planning / Design Tools
()	Human / Organization / Social
()	Virtual / Extended Enterprise

『 2 IMS Forum』

2002

「 IMS 」
 IMS
 : IMS
 35-3)330-825
) 02-5898-226/292) 02-5898-220/290 E-mail) jjin@kitech.re.kr
 Homepage) http://ims.kitech.re.kr



16 Outline
 Abstract Full Proposal
http://www.img.org/index_projects.html
 Outline Phase



IMS

3

IMS
 URL
 가

IMS

1. FashionNET IT
<http://www.ims.org/projects/outline/fashionet.html>

2. ShapeOpt
<http://www.ims.org/projects/outline/shapeopt.html>

3. MULAD-HSM
<http://www.ims.org/projects/outline/muladhsm.htm>

4. InCoCo
<http://www.ims.org/projects/outline/incoco.html>

5. WIN-mode
<http://www.ims.org/projects/outline/winmode.html>

6. LCIA PCB
<http://www.ims.org/projects/outline/lcia.html>

7. CETOOL
 /
<http://www.ims.org/projects/outline/cetool.html>

8. PERFECT 가
<http://www.ims.org/projects/outline/perfect.html>

9. SMARTFUN Load -
<http://www.ims.org/projects/outline/smartfun.html>

10. NETPRICE Configuration
<http://www.ims.org/projects/outline/netprice.html>

11. MOPXE
<http://www.ims.org/projects/outline/mopxe.html>

12. FDDQI
<http://www.ims.org/projects/outline/fddqi.html>

13. VHT HT 가
<http://www.ims.org/projects/outline/vht.html>

14. TALOS
<http://www.ims.org/projects/outline/talos.html>

15. NOE IMS 가
<http://www.ims.org/projects/outline/noe.html>

16. COST-WORTH IMS
<http://www.ims.org/projects/outline/costworth.html>

[For More Information] IMS <http://www.ims.org>, IMS
<http://ims.kitech.re.kr> IMS IMS
 : 041-5898-226,292

:330-825 35-3 WEB site <http://ims.kitech.re.kr>
 TEL 041-5898-291,292,226 FAX 041-5898-290 E-mail bwchoi@kitech.re.kr, hyosun@kitech.re.kr TEL: 02-2279-2209